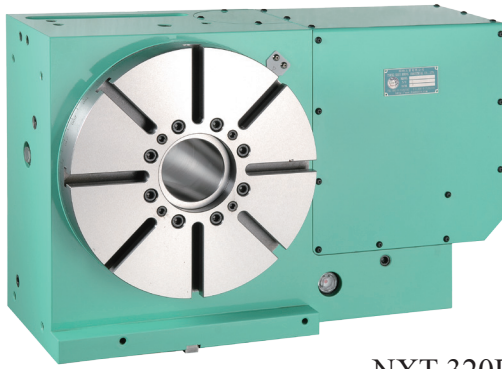
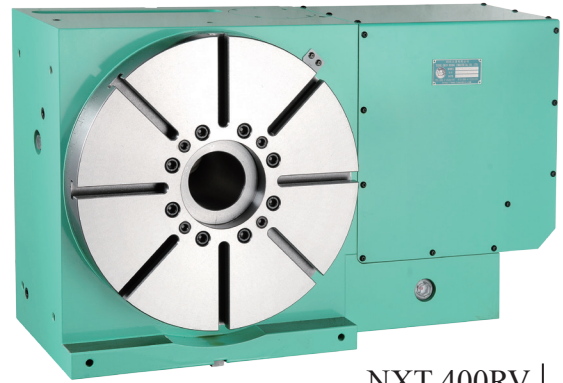


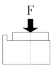
電腦數控齒式分割盤 CNC Hydraulic Coupling Gear Indexer



NXT-320RV



NXT-400RV

型式 Model		NXT-250R	NXT-320RV	NXT-400RV	NXT-500RV	
盤面直徑 Table diameter	mm	Ø 250	Ø 320	Ø 400	Ø 500	
基準中心孔 Center bore	mm	Ø 55 H7	Ø 100 H7	Ø 120 H7	Ø 120 H7	
主軸中心穿透孔 Diameter of center through hole	mm	Ø 30	Ø 80	Ø 80	Ø 90	
垂直放置中心高 Center height (vertically)	mm	170	230	250	310	
水平放置總高 Overall height (horizontally)	mm	200	240	265	300	
T 型槽寬度 Width of T-slot	mm	12 H7	14 H7	14 H7	18 H7	
基準導槽寬 Width of Guide block	mm	18 H7	18 H7	18 H7	18 H7	
鎖緊裝置 (油壓) Clamping device (Hydraulic)	kg/cm ²	35	35	35	35	
最小分割角度 Min. indexing degree	degree	5°	1°	5°	1°	
等分割數 Table division		72	360	72	360	
分割精度 (累積值) Indexing accuracy(accumulative)	arc sec	4"	4"	4"	4"	
重現精度 Repeatability	arc sec	±1"	±1"	±1"	±1"	
最高轉速 Max. rotation speed	轉盤 Table	rpm	16.6	27.7	16.6	11.1
	馬達 Motor	rpm	2000	2000	2000	2000
伺服馬達 (選配) Servo motor (optional)	發那科 FANUC		α8i	α12i	α12i	α12i
	三菱 MITSUBISHI		HF-104 / 154	HF-204T	HF-204T	HF-204T
	西門子 SIEMENS		1FK7063	1FK7083	1FK7083	1FK7083
	海德漢 HEIDENHAIN		QSY116E	QSY155B	QSY155B	QSY155B
總齒數比 Gear ratio		1/120	1/72	1/120	1/180	
容許切削扭力 Permissible cutting torque		48	78	170	240	
鎖緊扭力 Clamping torque	F	 kg	1500	2000	2500	3000
	FxR	 kg-m	300	400	500	600
	FxL	 kg-m	350	450	550	650
容許積載荷重 Load Capacity	0°	 kg	300	350	500	600
	90°	 kg	125	175	250	300
淨重 Net weight	kg	94	178	300	420	